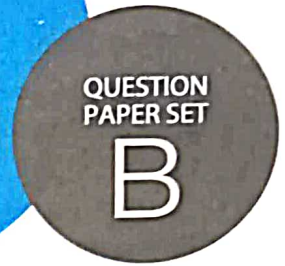
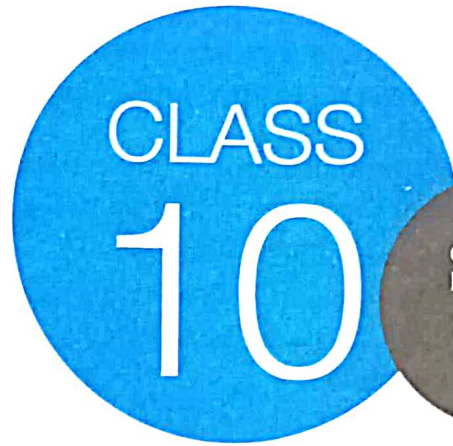




SOF INTERNATIONAL ENGLISH OLYMPIAD 2023-24



DO NOT OPEN THIS BOOKLET UNTIL ASKED TO DO SO

Total Questions: 50 | Time: 1 hr.

### Guidelines for the Candidate

- You will get additional ten minutes to fill up information about yourself on the OMR Sheet, before the start of the exam.
- Write your **Name, School Code, Class, Section, Roll No.** and **Mobile Number** clearly on the **OMR Sheet** and do not forget to sign it. We will share your marks / result and other information related to SOF exams on your mobile number.
- The Question Paper comprises four sections:

**Word and Structure Knowledge** (30 Questions), **Reading** (10 Questions), **Spoken and Written Expression** (5 Questions) and **Achievers Section** (5 Questions).

Each question in Achievers Section carries 3 marks, whereas all other questions carry one mark each.

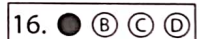
- All questions are compulsory. There is no negative marking.
- There is only ONE correct answer. Choose only ONE option for an answer.
- To mark your choice of answers by darkening the circles on the OMR Sheet, use **HB Pencil** or **Blue / Black ball point pen** only. E.g.

**Q.16: Fill in the blank.**

Please teach my dog \_\_\_\_ a ball.

- A. to fetch    B. learn    C. show    D. to learn

As the correct answer is option A, you must darken the circle corresponding to option A on the OMR Sheet.



- Return the OMR Sheet to the invigilator at the end of the exam.
- Please fill in your personal details in the space provided before attempting the paper.

Name:.....

SOF Olympiad Roll No.:..... Contact No.:.....



SCIENCE OLYMPIAD FOUNDATION  
Inspiring Young Minds Through Knowledge Olympiads



<b>THE WORLD'S BIGGEST OLYMPIADS</b>	<b>25 Years</b> of trust	<b>91,000+</b> Schools	<b>70</b> Countries	<b>5.6+ Crores</b> Assessments	<b>7</b> Olympiads
--	-----------------------------	---------------------------	------------------------	-----------------------------------	-----------------------

## WORD AND STRUCTURE KNOWLEDGE

FOR QUESTIONS 1 TO 24, CHOOSE THE CORRECT OPTION TO FILL IN THE BLANK.

1. When the animals came to the village for shelter from the forest fire, there was a huge \_\_\_\_\_ among the villagers.
  - A. satisfaction
  - B. betrayal
  - C. appreciation
  - D. commotion

---

2. When I first went to the United Kingdom for work, I was questioned about my \_\_\_\_\_ because they couldn't determine where exactly I was from.
  - A. ascend
  - B. ascent
  - C. accent
  - D. assent

---

3. The ever-increasing nature of global warming has long been ignored by governments \_\_\_\_\_ the world.
  - A. thoroughly
  - B. throughout
  - C. through
  - D. thorough

---

4. When we arrived at the resort, my \_\_\_\_\_ welcomed us with a huge box of gifts they had saved up for the occasion.
  - A. brother-in-law
  - B. brother-in-laws
  - C. brothers-in-law
  - D. brothers-in-laws

---

5. A/An \_\_\_\_\_ voice emanating from the forest \_\_\_\_\_ the hunters while they were resting.
  - A. euphonious, enthralled
  - B. enthralled, euphonious
  - C. euphony, destroyed
  - D. emphatic, encapsulate

---

6. Political agendas these days are so unclear. They \_\_\_\_\_ about pressing matters just for the vote banks.
  - A. generalised
  - B. equalises
  - C. equivocate
  - D. formulise

---

7. \_\_\_\_\_ suggested that I give dance a try, but \_\_\_\_\_ told me about body ache that comes later.
  - A. Someone, nobody
  - B. Anybody, somebody
  - C. Anyone, someone
  - D. None, none

---

8. Some may term it offensive, but a government that does its best to hamper the rights of women can only be called \_\_\_\_\_.
  - A. misandry
  - B. misogyny
  - C. misogynist
  - D. misogynous

---

9. I \_\_\_\_\_ whatever I could, but I know how horrific things would turn out later.
  - A. will have done
  - B. would have done
  - C. might done
  - D. must do

---

10. The \_\_\_\_\_ who delivered you when you were born now owns the nearby maternity clinic.
  - A. obstetrician
  - B. paediatrician
  - C. dermatologist
  - D. orthopaedist

---

11. "Sir," the beggar whined, "I haven't eaten in two days."  
The beggar whined to the man that \_\_\_\_\_.
  - A. he hasn't eaten in two days
  - B. he had not been eating for two days
  - C. he hadn't eaten in two days
  - D. he haven't eaten in two days



12. The car accident that led to his paralysis occurred \_\_\_\_\_ their marriage, but she still agreed to go ahead with the wedding.

- A. prior to
- B. prior with
- C. prior for
- D. prior as

13. The state \_\_\_\_\_ the shops in and around the vicinity of the hospital to sell life-saving drugs at the \_\_\_\_\_ rates possible for the poorer people.

- A. licensing, cheapest
- B. licensed, cheapest
- C. licensed, cheaper
- D. license, cheaper

14. Honestly, I would prefer the generosity of the old man \_\_\_\_\_ the arrogant attitude of the rich lady.

- A. to
- B. for
- C. or
- D. with

15. My neighbours have \_\_\_\_\_ son and \_\_\_\_\_ daughter. But \_\_\_\_\_ daughter left for college two years ago.

- A. a, a, a
- B. a, a, the
- C. the, the, the
- D. a, the, a

16. \_\_\_\_\_ of my family members turned up for the school's play, leaving me shocked and angry.

- A. None
- B. Anyone
- C. Anybody
- D. Somebody

17. Let's promise that we'll contact \_\_\_\_\_ monthly so that we'll know more about \_\_\_\_\_.

- A. each another, each other
- B. one another, each another
- C. one another, each other
- D. each another, one another

18. \_\_\_\_\_ the prohibition and illegality of the procedure, the laboratory continued to work on its secret science experiment.

- A. Despite
- B. As
- C. Although
- D. Unless

19. As an airhostess, Julia \_\_\_\_\_ flown on a lot of international flights by now.

- A. have had
- B. will have
- C. will had
- D. would had

20. If you \_\_\_\_\_ me about your financial crisis sooner, I \_\_\_\_\_ able to help you out.

- A. had told, would have been
- B. have told, would have been
- C. told, will have be
- D. would have told, will be

21. As soon as we heard the news of his success, we \_\_\_\_\_ went to his house to congratulate him.

- A. queasily
- B. solemnly
- C. promptly
- D. terribly

22. He agreed to accompany us on the cross-country trip, \_\_\_\_\_ we bear all his expenses.

- A. unless
- B. since
- C. as well as
- D. provided that

23. As we were driving \_\_\_\_\_ the highway, we saw a huge bear trying to climb \_\_\_\_\_ the back seat of a car.

- A. in, in
- B. inside, onto
- C. along, into
- D. into, at

24. \_\_\_\_\_ I won the match by a margin, it was evident that she is a better tennis player than I am.

- A. Even though
- B. As well as
- C. In spite
- D. Except

FOR QUESTIONS 25 AND 26, CHOOSE THE CORRECT SYNONYM OF THE GIVEN WORD.

25. Diaphanous

- A. Opaque
- B. Obfuscatory
- C. Gossamer
- D. Impenetrable

26. Senility

- A. Strength
- B. Tenacity
- C. Brawniness
- D. Dotage

FOR QUESTIONS 27 AND 28, CHOOSE THE CORRECT ANTONYM OF THE GIVEN WORD.

27. Compendiary

- A. Dilatant
- B. Pithy
- C. Succinct
- D. Brusque

28. Toady

- A. Stooge
- B. Lackey
- C. Fawner
- D. Independent

FOR QUESTIONS 29 AND 30, CHOOSE THE OPTION WITH CORRECT SPELLING.

29. How do you spell the word that means fermented milk drink similar to yogurt?

- A. Kifir
- B. Kefir
- C. Kufir
- D. Kafir

30. How do you spell the word that means hotel employee who assists guests?

- A. Concirge
- B. Concerge
- C. Conceirge
- D. Concierge

## READING

FOR QUESTIONS 31 TO 35, READ THE PASSAGE AND ANSWER THE QUESTIONS THAT FOLLOW.

In order to eliminate or at least control stress, it is vital to know and understand the causes of stress. Of course, there are many causes of stress, and they are as varied as the people who suffer from it, but there are a few places to look first. And by learning about these causes of stress, you can figure out where stress is entering your life.

One of the most common and most complained-about causes of stress is work. However, it is not only the day-to-day

tasks and routine pressures of work that can lead to stress. In fact, the mere concern about keeping a job can be a source of stress. Unfortunately, the combined stress of both work itself and the possibility of losing it creates a sort of double stress in which people feel they have to work even harder in order to keep their jobs, making the stress that much worse.

As well, for those who have not entered the working world yet, school can be a great source of stress. The constant pressure of schoolwork, friends, teachers, tests, quizzes, papers, and everything else can be enough



to make anyone feel like they are trapped in a vice. In addition, the deadlines are all immovable, so students are constantly under time pressure. Thus, students need to manage stress just as much as people who work.

Another cause of stress is simple family life. Unfortunately, though we hope that our home lives can be sources of relief from daily stress, they can often be sources of stress all their own. For children as well as parents and spouses, the home can often be its own source of pressure. For parents, stress can often come from simply worrying about their children. Thus, despite the joy that children can bring, they can also cause stress and worry.

Unfortunately, parents can be causes of stress as well. Though they often have their children's best interests in mind, they can also put a lot of pressure on their children, causing them to worry not only about school or life but also how their parents will react when they hear about some new event, success, or error. It is as though there is no place to turn when things go wrong, creating extra stress. No, it is not easy being a parent, but it isn't always easy being a child or a teenager either, since parents can often be causes of stress as much as sources of comfort from it.

On top of that, spouses can also cause stress. Let's face it, husbands and wives often have expectations of their significant others, and it is not always easy to live up to those expectations.

Money is also a major cause of stress, simply because there never seems to be enough of it. Thus, as the money keeps going out but never seems to come in enough, stress just keeps mounting. Unfortunately, spouses, children and sometimes parents can often remind us of our shortfalls, and they will often increase the stress. Thus, money stress just keeps piling up higher and higher, and there never seems to be a way out.

Though this is only a partial list of all the possible causes of stress, these are some of the most common sources. However, no matter where the problem arises, stress will not make it better. Rather, in order to solve the problems that lead to stress, the best place to start is by managing the stress, then working to solve the problems with a clear and uncluttered mind.

31. Read the statements I and II and select the correct option.
- Statement I : Keeping a job and getting the tasks done on a daily basis may lead a person to work harder.
- Statement II : Having an idea of the insecurity of jobs may be enough to create stress.
- A. Statement II is the effect of Statement I.  
B. Statement I is the effect of Statement II.  
C. Both the Statements I and II are incorrect.  
D. Statement I is correct but Statement II is incorrect.
- 
32. Select the incorrect statement about the causes of stress.
- A. Parents are responsible for their children's stress at times.  
B. Money always decreases the chances of stress getting worse.  
C. Spouses as well as parents are equally responsible for being a reason for stressful life.  
D. For a working person, concern about keeping a job can be the cause of stress.
- 
33. Stress can be controlled by \_\_\_\_\_.
- A. rebuking everyone  
B. managing it and then trying to solve it with a peaceful mind  
C. visiting a doctor  
D. becoming careless
- 
34. Select the word that is opposite of the word 'incorporate'.
- A. Include  
B. Invite  
C. Eliminate  
D. Receive



35. What are the possible causes of stress for a working adult?
- A. Workplace
  - B. Schoolwork, quizzes, teachers and parents
  - C. Family, stress between spouses, and money
  - D. Both A and C

FOR QUESTIONS 36 TO 40, READ THE PASSAGE AND ANSWER THE QUESTIONS THAT FOLLOW.

Responsible Tourism is a new concept in the tourism industry. This concept was developed by Jost Krippendorf in the 1980s. His aim was “to develop and promote new forms of tourism that will bring the greatest possible benefit to all the participants—travellers, the host population, and the tourist business—without causing intolerable ecological and social damage.”

Responsible Tourism can be defined as “tourism that creates better places for people to live and better places to visit”. Some of the main objectives of Responsible Tourism are as follows:

1. To respect local cultures—traditions, religions and promote heritage.
2. To protect the environment—its flora, fauna and landscapes.
3. To conserve natural resources—from source to destination.
4. To benefit local communities, both economically and socially.
5. To minimize pollution through noise, waste disposal and congestion.

In a nutshell, Responsible Tourism is that form of tourism in which initiatives and responsibilities are taken by both the tourists and the travel agencies to maximize the positive impacts and minimize the negative impacts on the environment, traditions and cultural heritage of the region.

Responsible Tourism is a rapidly growing global trend. India has abundant scope to emerge as a Responsible Tourism

destination. The Indian tourism industry has grown immensely in the last five years, and it is for sure that in the upcoming years, India will become a hot tourist destination in South-East Asia. To sustain this growth process, it is necessary that all the stakeholders of the Indian tourism industry, i.e., tour operators, government agencies and NGOs, work in cohesion. They must protect the heritage of our country, which in turn will benefit both the local communities and the tourists.

To develop India as a Responsible Tourism destination, ICRT India, which stands for International Centre for Responsible Tourism works in collaboration with the private sector, government and local communities. It is a Bangalore-based non-profit organization, established in 2006, whose main objective is to “take responsibility for achieving sustainable tourism and to create better places for people to live in and for people to visit.” It provides policy advice, research and consultation on developing Responsible Tourism in India.

Among all Indian states, Kerala has pioneered innovative tourism ideas. It is a state rich in traditions and culture. It has started Responsible Tourism in the state to create awareness among all stakeholders for a better environment to live in and visit. Kerala organized the second International Responsible Tourism Conference from March 21<sup>st</sup> to March 24<sup>th</sup>, 2008.

Some of the successful Responsible Tourism projects in India are :

“Sunderban Jungle Camp” initiated by Help Tourism Group to connect the heritage sites and protected areas of Sunderban with the livelihood of the local communities through community-based, environmentally and socially responsible tourism.

Another Responsible Tourism project in India is in the Anakkara Spice Tourism



Village in the Idukki district of Kerala. This project was started in October 2004 by Women in Agriculture (WIA), a group of women who has joined hands to preserve nature, share the benefits of tourism among the local populace and boost the local economy. This project has enabled these ladies to improve their standard of living by providing their share of income for the well-being of their family.

36. Read the statements I and II and select the correct option.

Statement I : ICRT is a Bangalore-based profitable organization that was established in 2006.

Statement II : One of the Responsible Tourism Projects of India is in the Anakkara Spice Tourism Village in the Idukki district of Kerala.

- A. Statement I is correct but Statement II is incorrect.
- B. Statement I is incorrect but Statement II is correct.
- C. Both the Statements I and II are incorrect.
- D. Both the Statements I and II are correct.

37. Select the correct statements about the tourism in India.

- i. Kerala is a state rich in traditions and culture.
- ii. Benefiting local communities is not one of the main objectives of Responsible Tourism.

iii. ICRT provides research, consultation and policy advice to sustain Responsible Tourism.

iv. To sustain the growth progress, it is necessary for all the organisations to work in collaboration.

- A. i, ii and iv only
- B. i, ii and iii only
- C. i, iii and iv only
- D. i, ii, iii, and iv

38. Responsible tourism's objective(s) is/are \_\_\_\_\_.

- A. to protect the environmental aspects and minimise pollution
- B. to benefit local communities and conserve natural resources
- C. to respect local cultural aspects
- D. all of these

39. The main objective of starting Responsible Tourism in Kerala is \_\_\_\_\_.

- A. to maintain the balance of socio-economic development
- B. to make people aware of tourism
- C. to create an awareness among the leaders of political parties in the state
- D. to create an awareness among the stakeholders about a better environment to live in

40. Select the word that is similar in meaning to "the ability to stay together or fit together well".

- A. Preserve
- B. Sustainable
- C. Cohesion
- D. Intolerable

## SPOKEN AND WRITTEN EXPRESSION

FOR QUESTIONS 41 TO 45, CHOOSE THE CORRECT OPTION TO COMPLETE EACH CONVERSATION.

41. Shane: An alma mater refers to the school or college from which one \_\_\_\_\_, not the one you're currently in.

- A. graduated
- B. is graduated from
- C. was graduated
- D. have graduated

42. Detective : Like it or not, death is an \_\_\_\_\_ part of human life, and as detectives, we work

hard to try to give closure to a victim's family by solving the crime.

- A. admiring
- B. adamant
- C. insolent
- D. integral

43. Nidhi : Aditya admitted that he \_\_\_\_\_ was the cause of all the backlog in the entry of details for the event.

- A. yourself
- B. himself
- C. himself
- D. myself



44. Principal: \_\_\_\_\_ the severity of the weather, the school will remain closed for a week starting tomorrow.

- A. On behalf of
- B. On top for
- C. Except for
- D. On account of

45. Sammy : I thought you \_\_\_\_\_ given the project, given your qualifications and availability for that period.

- A. might have been
- B. would be
- C. has been
- D. might have had been

### ACHIEVERS SECTION

FOR QUESTIONS 46 AND 47, CHOOSE THE CORRECT OPTION TO FILL IN THE BLANK.

46. The state is \_\_\_\_\_ affluent people who also hold all the \_\_\_\_\_ positions in government offices, while the poor continue to suffer.

- A. saved by, preceding
- B. influenced by, prominence
- C. run by, prominent
- D. programmed by, postulate

47. When I was told that I had to come as a guest of honour, I was \_\_\_\_\_ to be invited, and it'll be a huge honour to even be invited.

- A. gobsmacked
- B. persecuted
- C. satiated
- D. obliterated

48. CHOOSE THE CORRECT SYNONYM OF THE GIVEN WORD.

Magniloquent

- A. Curt
- B. Turgid
- C. Laconic
- D. Trenchant

49. CHOOSE THE CORRECT ANTONYM OF THE GIVEN WORD.

Nescience

- A. Cognizance
- B. Sciolism
- C. Inscience
- D. Philistinism

50. CHOOSE THE CORRECT OPTION TO COMPLETE THE CONVERSATION.

Abhay : Rohan is \_\_\_\_\_, as he easily gets lost in the neighbourhood despite living here for so many years.

- A. full of beans
- B. salt of the earth
- C. one sandwich short of a picnic
- D. low hanging fruit



For latest updates & information, please like our Facebook page ([www.facebook.com/sofworld](http://www.facebook.com/sofworld)) or register on <http://www.sofworld.org/subscribe-updates.html>  
For Level 1 and Level 2 preparation material / free sample papers, please log on to [www.mtg.in](http://www.mtg.in)



**National Office:** Plot 99, First Floor, Sector 44 Institutional area, Gurugram -122 003 (HR) India  
**Email:** [info@sofworld.org](mailto:info@sofworld.org) | **Website:** [www.sofworld.org](http://www.sofworld.org)  
**Regd. Office:** 406, Taj Apt., Ring Road, New Delhi-110 029  
**Note:** Please address all communication to the National Office only.