



SOF INTERNATIONAL ENGLISH OLYMPIAD 2023-24



SCHOOL LIBRARY PACK (SLP)

- School Library Pack (SLP) contains one set of question papers classwise and 2 numbers of OMR sheets.
- SLP should be kept in the custody of School Head/Principal before/during the exam.
- It may be handed over to the library/teacher incharge once the exam is over for the reference of teachers/students.

Contents

1. Question Paper

Class 1	1 No.
Class 2	1 No.
Class 3	1 No.
Class 4	1 No.
Class 5	1 No.
Class 6	1 No.
Class 7	1 No.
Class 8	1 No.
Class 9	1 No.
Class 10	1 No.
Class 11	1 No.
Class 12	1 No.

2. OMR Sheets

..... 2 Nos.

SE
OPEN AFTER



THE WORLD'S
BIGGEST
OLYMPIADS

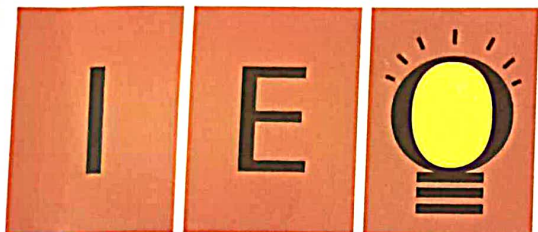
25 Years
of trust

91,000+
Schools

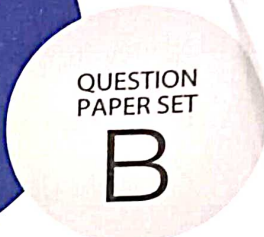
70
Countries

5.6+ Crores
Assessments

7
Olympiads



SOF INTERNATIONAL ENGLISH OLYMPIAD 2023-24



DO NOT OPEN THIS BOOKLET UNTIL ASKED TO DO SO

Total Questions: 35 | Time: 1 hr.

Guidelines for the Candidate

1. You will get additional ten minutes to fill up information about yourself on the OMR Sheet, before the start of the exam.
2. Write your **Name, School Code, Class, Section, Roll No.** and **Mobile Number** clearly on the **OMR Sheet** and do not forget to sign it. We will share your marks / result and other information related to SOF exams on your mobile number.
3. The Question Paper comprises four sections:
Word and Structure Knowledge (15 Questions), **Reading** (10 Questions), **Spoken and Written Expression** (5 Questions) and **Achievers Section** (5 Questions).

Each question in Achievers Section carries 2 marks, whereas all other questions carry one mark each.

4. All questions are compulsory. There is no negative marking.
5. There is only ONE correct answer. Choose only ONE option for an answer.
6. To mark your choice of answers by darkening the circles on the OMR Sheet, use **HB Pencil** or **Blue / Black ball point pen** only. E.g.

Q.16: Fill in the blank.

My father went _____ to buy some milk.

- A.** there **B.** their **C.** they're **D.** these

As the correct answer is option A, you must darken the circle corresponding to option A on the OMR Sheet.



7. Return the OMR Sheet to the invigilator at the end of the exam.
8. Please fill in your personal details in the space provided before attempting the paper.

Name:.....

SOF Olympiad Roll No.:..... Contact No.:.....



THE WORLD'S BIGGEST OLYMPIADS

25 Years
of trust

91,000+
Schools

70
Countries

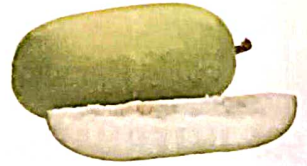
5.6+ Crores
Assessments

7
Olympiads

WORD AND STRUCTURE KNOWLEDGE

FOR QUESTIONS 1 TO 4, CHOOSE THE CORRECT WORD THAT DESCRIBES THE PICTURE.

1. A. Watermelon
B. Apple gourd
C. Ash gourd
D. Yam



2. A. Hair
B. Cheek
C. Forehead
D. Chin



3. A. Cat
B. Leopard
C. Bison
D. Wolf



4. A. Webcam
B. Air purifier
C. Oven
D. Egg boiler



FOR QUESTIONS 5 AND 6, CHOOSE THE CORRECT ANSWER.

5. What is the young one of a monkey called?
A. Kid
B. Infant
C. Cub
D. Foal

Where can you find the meaning of a word?

- A. School
- B. Diary
- C. Dictionary
- D. Newspaper

FOR QUESTIONS 7 AND 8, CHOOSE THE CORRECT OPTION FOR THE UNDERLINED WORD.

My tea is very hot.

- A. Noun
- B. Adjective
- C. Adverb
- D. Verb

The boy jumped into the river.

- A. Preposition
- B. Conjunction
- C. Article
- D. Verb

FOR QUESTIONS 9 TO 12, CHOOSE THE CORRECT OPTION TO FILL IN THE BLANK.

9. I met _____ stranger in the park.

- A. a
- B. an
- C. the
- D. no article

10. My mother is _____ the vegetables.

- A. chop
- B. chopping
- C. cut
- D. cuts

11. The cat jumped _____ the fence.

- A. to
- B. at
- C. over
- D. of

12. I like _____ soup hot.

- A. our
- B. mine
- C. me
- D. my

13. CHOOSE THE OPTION WITH CORRECT SPELLING.

- A. SLIPERY
- B. SLIPREY
- C. SLIPPERY
- D. SILLPERY

14. CHOOSE THE WORD THAT MEANS SAME AS GATHER.

A. Collect

B. Spend

C. Divide

D. Grip

15. CHOOSE THE OPPOSITE OF SELFISH.

A. Mean

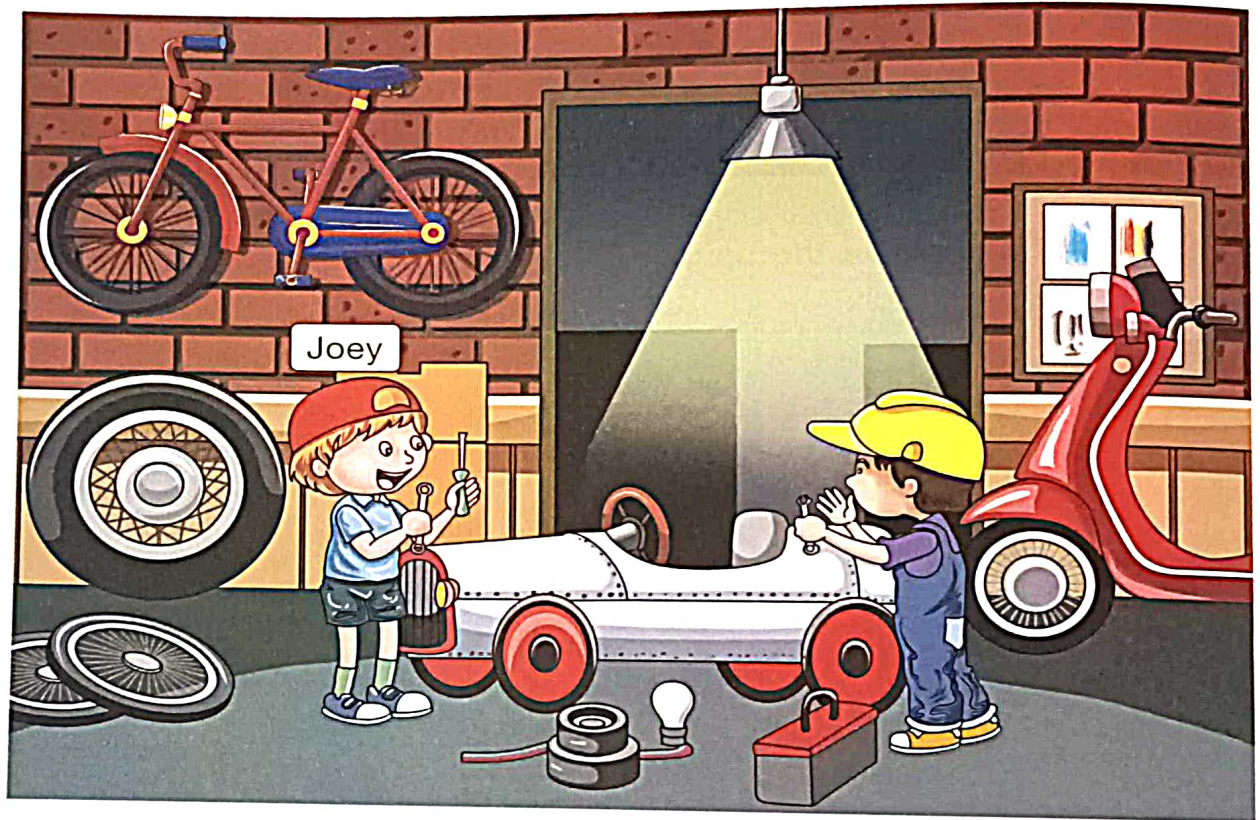
B. Narrow

C. Generous

D. Greedy

READING

FOR QUESTIONS 16 TO 20, LOOK AT THE PICTURE AND CHOOSE THE CORRECT ANSWER.



16. The wall behind is made _____ bricks.

A. on

B. of

C. in

D. at

17. There is _____ bicycle hanging on the wall.

A. a

B. an

C. the

D. no article

8. Joey _____ happy.

A. look

B. looks

C. looking

D. is looked

9. This is an image of a _____.

A. gym

B. bank

C. garage

D. mall

10. There is no _____ in the image.

A. screwdriver

B. scooter

C. tyre

D. curtain

FOR QUESTIONS 21 TO 25, READ THE PASSAGE AND ANSWER THE QUESTIONS THAT FOLLOW.

One summer's day, in a field, a Grasshopper was hopping about, chirping and singing to its heart's content. An Ant passed by, carrying with great effort an ear of corn that he was taking to his nest.

"Why don't you come and chat with me," asked the Grasshopper, "instead of toiling your life away?"

"I am helping to store up food for the winter," said the Ant, "and I recommend you to do the same."

"Why bother about winter?" said the Grasshopper. "We have plenty of food at present."

But the Ant went on its way and continued its toil.

When winter came, the Grasshopper found himself dying of cold and hunger as he had no shelter and no food to eat. He was passing by the Ant's nest and saw the ants happy and distributing corn and grains from the stores to everybody they had collected in the summer.

Then the Grasshopper knew that he should have listened to the Ant and realised that all days are not sunny, and just like the Ant, he should have also been prepared for the winters.

- *Aesop's Fables*

21. What is the passage about?

A. The Ant and the Grasshopper

B. The Grasshopper's hard work

C. The Ant's idleness

D. The Ant and the summer

22. What was the Grasshopper doing?
- A. He was working hard to collect food.
 - B. He was hopping about, chirping and singing.
 - C. He was helping the Ant.
 - D. He was sleeping in a hole.
-
23. The Ant was carrying a/an _____ with great effort.
- A. grain of wheat
 - B. piece of wood
 - C. ear of corn
 - D. slice of bread
-
24. What happened to the Grasshopper in the winter?
- A. He was dying of cold and hunger.
 - B. He was eating corn that he had already stored.
 - C. He dug a hole and went inside.
 - D. He didn't care about feeling cold and hungry.
-
25. The Grasshopper realised that all days are not _____, and he should have also be prepared for the winters.
- A. windy
 - B. sunny
 - C. rainy
 - D. cloudy

SPOKEN AND WRITTEN EXPRESSION

FOR QUESTIONS 26 TO 30, CHOOSE THE MOST SUITABLE OPTION TO COMPLETE EACH CONVERSATION.

26. Jenny : _____ are you planning to wear today?

Meena : I have not decided yet.

- A. Which
- B. How
- C. What
- D. Whom

27. Sherry : You speak Chinese _____ well.

- A. less
- B. to
- C. little
- D. very

28. Nitin : I take these medicines _____ bedtime.

- A. after
- B. always
- C. before
- D. under

29. Mother : Reema asked her friend to come _____.

- A. on
B. over
C. at
D. to

30. Tina : Jaya opened the window _____ it was dark inside.

- A. but
B. because
C. or
D. so

ACHIEVERS SECTION

FOR QUESTIONS 31 AND 32, CHOOSE THE CORRECT OPTION TO FILL IN THE BLANK.

31. They had a hard time finding _____ room.

- A. there
B. their
C. its
D. here

32. Did you _____ your mother about it?

- A. told
B. tells
C. telling
D. tell

33. CHOOSE THE CORRECT SPELLING.

- A. SPECTACLES
B. SPCKTACLES
C. SPECTACKLES
D. SPCECALES

34. CHOOSE THE CORRECT ADJECTIVE FROM THE GIVEN OPTIONS.

Sheena sang a melodious song.

- A. Sheena
B. Sang
C. Melodious
D. Song

35. CHOOSE THE CORRECT OPTION TO COMPLETE THE CONVERSATION.


Father : Soni _____ her mistake.

Mother : I am so proud of her.

- A. blamed
B. confessed
C. told
D. refused





For latest updates & information, please like  our Facebook page (www.facebook.com/sofworld) or register on <http://www.sofworld.org/subscribe-updates.html>

For Level 1 and Level 2 preparation material / free sample papers, please log on to www.mtg.in



National Office: Plot 99, First Floor, Sector 44 Institutional area, Gurugram -122 003 (HR) India
 Email: info@sofworld.org | Website: www.sofworld.org
 Regd. Office: 406, Taj Apt., Ring Road, New Delhi-110 029
Note: Please address all communication to the National Office only.