

C 05073

9th Std. – ENGLISH QUESTION BOOKLET



THE GREATER BOMBAY SCIENCE TEACHERS' ASSOCIATION
DR. HOMI BHABHA BALVAIDNYANIK COMPETITION
2022-23

DATE OF EXAMINATION : 26 NOVEMBER 2022

TIME : ONE HOUR THIRTY MINUTES

MARKS : 100

EXAM SEAT NO. :

--	--	--	--	--	--	--	--	--	--

EXAMPLE

2 परीक्षार्थी बैठक क्रमांक
EXAM SEAT NO.

9	2	7	0	1	8	3	5	4	9
1	1	1	1	1	1	1	1	1	1
2	2	2	2	2	2	2	2	2	2
3	3	3	3	3	3	3	3	3	3
4	4	4	4	4	4	4	4	4	4
5	5	5	5	5	5	5	5	5	5
6	6	6	6	6	6	6	6	6	6
7	7	7	7	7	7	7	7	7	7
8	8	8	8	8	8	8	8	8	8
9	9	9	9	9	9	9	9	9	9
0	0	0	0	0	0	0	0	0	0

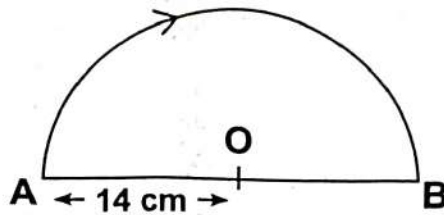
IMPORTANT

Please write your Exam Seat No. in the row of boxes in column No. 2 of your ANSWERSHEET and darken the oval that corresponds to each of the numerals as shown in the example, using black ball point pen.

INSTRUCTIONS:

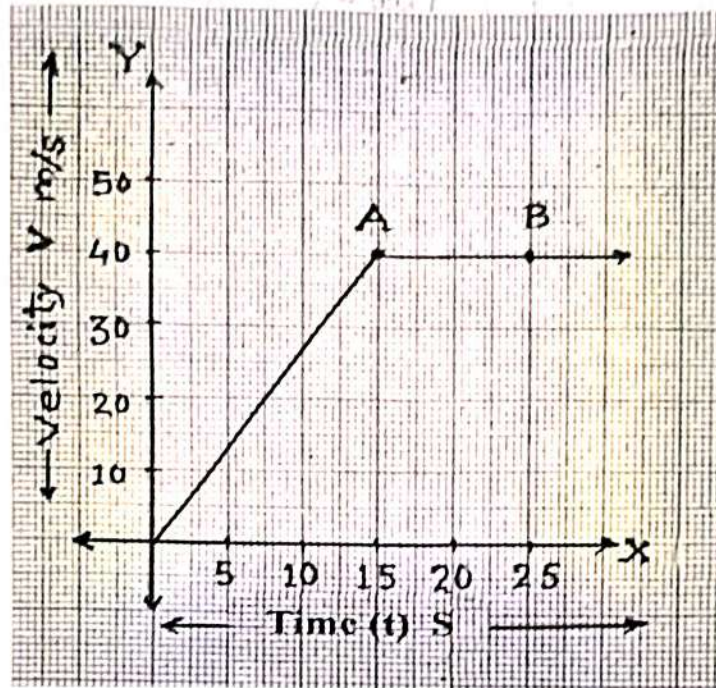
1. Write your Exam Seat No. on this test booklet in the space provided above.
2. This test booklet contains 100 Questions.
3. Each question carries 1 mark.
4. Check to make sure that you have received the appropriate test booklet for your standard/medium.

001. An object is moving along the Semi-circular path of radius 14m from point A to point B in 4 seconds. What will be its speed and velocity respectively?



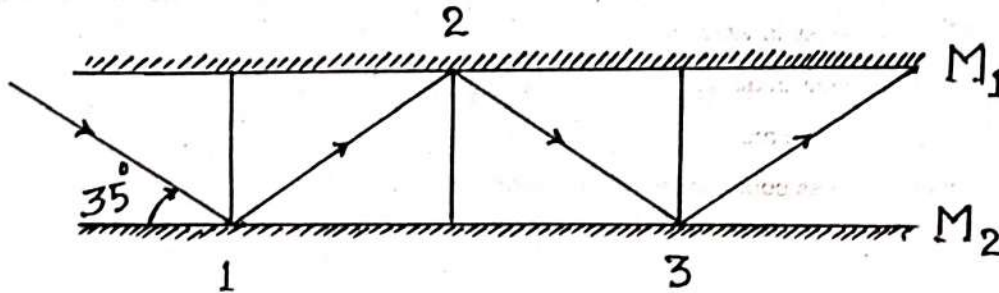
- (A) 7 m/s, 11 m/s
(B) 18 m/s, 7 m/s
(C) 7 m/s, 18 m/s
(D) 11 m/s, 7 m/s
002. The object of height 3 cm is kept at a distance of 15 cm in front of the concave mirror. The image is formed at 30 cm away from the mirror on front side. Then choose the correct pair of the magnification and nature of the image from the following.
- (A) (-2, Real & Inverted)
(B) (-2, Virtual, Erect)
(C) (2, Virtual & Erect)
(D) (2, real & Inverted)
003. Why PDF files are easy to view, print, and handle?
- (A) PDF files can view in all OS.
(B) PDF files cannot be modified.
(C) PDF files take less space to store more information.
(D) All above.
004. Related to our galaxy select the alternative of correct pair.
- | | |
|------------------------------|--------------------|
| a) No of stars in galaxy | 1) 2×10^8 |
| b) Diameter (in km) | 2) 10^{18} |
| c) Period of rotation(years) | 3) 10^{11} |
- (A) a - 2, b - 3, c - 1
(B) a - 3, b - 2, c - 1
(C) a - 1, b - 3, c - 2
(D) a - 2, b - 1, c - 3

005. Observe velocity - time graph of a car. Then find the acceleration and distance travelled from point A to B.



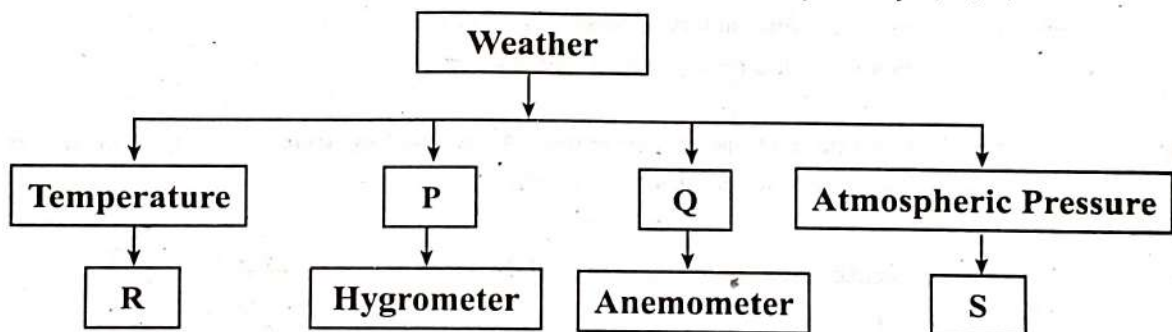
- (A) Acceleration is 0 m/s^2 and distance travelled is 400m.
 (B) Acceleration is 4 m/s^2 and distance travelled is 600m.
 (C) Acceleration is 0 m/s^2 and distance travelled is 1000m.
 (D) Acceleration is 4 m/s^2 and distance travelled is 400m.

006. In the given figure two parallel mirrors are shown. An incident ray makes an angle 35° with mirror. Then what is the measure of angle of reflection after third reflection?



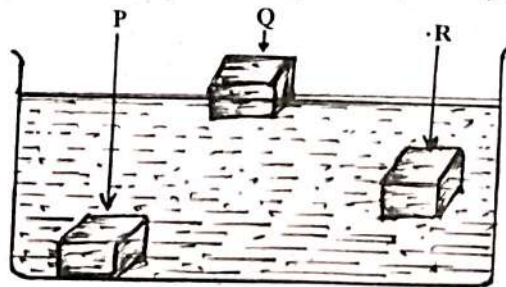
- (A) 35° (B) 45° (C) 55° (D) 65°
007. What is the change in pressure if the force is doubled and the area on which force applied is halved?
 (A) Double (B) Remains same (C) Four times (D) Half
008. When 2A current flows through the copper wire having diameter 14 mm and length is 15 cm Then what is the area of cross-section of copper wire?
 (A) 1.54 cm^2 (B) 1.54 mm^2 (C) 6.14 cm^2 (D) 6.14 mm^2

009. On which of the following blocks the magnetic needle will not work properly ?
- i) Nickel ii) Rubber iii) Cobalt iv) Wood
- (A) i, iii (B) ii, iii (C) i, ii, iii (D) ii, iii, iv
010. A star rose at 8.20 pm. on 15th Nov. 2022. Then at what time it will rise on 26th Nov. 2022?
- (A) 9.04 pm. (B) 7.36 pm.
- (C) 7.40 pm. (D) 9.08 pm.
011. Which of the following statement is correct when two parallel insulated wires placed near each other and carrying current in opposite direction?
- (A) They will not affect each other (B) They attract each other
- (C) They repel each other (D) There will be short circuit between them
012. Select the correct group of units of pressure from the following
- P) Pascal Q) N/m² R) dyne/cm² S) bar
- (A) P, Q, S (B) P, R, S (C) P, Q, R (D) P, Q, R, S
013. If we supply 50cal heat to 10g of ice cold water, what will be its temperature?
- (A) 2°C (B) 5°C (C) 8°C (D) 10°C
014. Observe the given flow chart & select the alternative which correctly identify P, Q, R, S



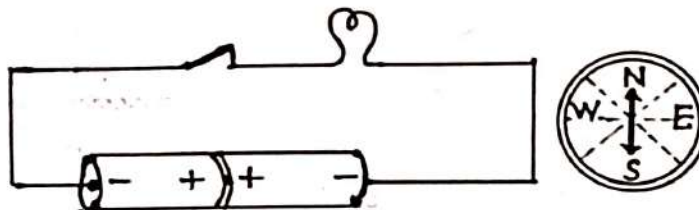
- (A) P – Humidity, Q – Wind speed, R – Thermometer, S – Multimeter
- (B) P – Humidity, Q – Wind speed, R – Thermometer, S – Barometer
- (C) P – Wind speed, Q – Humidity, R – Thermometer, S – Barometer
- (D) P – Wind speed, Q – Humidity, R – Thermometer, S – Multimeter
015. Select the correct group of reasons for the magnification of image by a convex mirror is always positive number less than 1.
- I) The image is always smaller than object.
- II) The image is inverted and smaller than object.
- III) The image is virtual.
- IV) The image is erect and larger than object.
- (A) I, III (B) Only III (C) III, IV (D) II, III

016. The speed of sound at 5°C is 330 m/s. The speed of sound increases by 0.6 m/s per degree Celsius. Then determine the difference in temperature when the speed of sound is 348 m/s?
 (A) 30°C (B) 3°C (C) 2.5°C (D) 25°C
017. Complete the following analogy related to $W = FS \cdot \cos \theta$ Zero work: $\theta = 90^{\circ}$: : + ve work :
 (A) $\theta = 120^{\circ}$ (B) $\theta = 0^{\circ}$ (C) $\theta = 180^{\circ}$ (D) None of these
018. If the length of metal wire is increased by 20% & area of cross section is increased by 6 times that of original. Then select the proper relation between resistance of these two metal wires?
 (A) $R_1 = 5R_2$ (B) $5R_1 = R_2$ (C) $R_1 < R_2$ (D) $5R_1 = 6R_2$
019. Read the following statements & choose the correct option from the following.
 Statement 1: The value of acceleration due to the gravity of Earth does not depend upon the mass of the body.
 Statement 2: Acceleration due to the gravity is a constant physical quantity.
 (A) Both statements 1 & 2 are true and statement 2 is the correct explanation of statement 1.
 (B) Both statements 1 & 2 are true and statement 2 is not the correct explanation of statement 1.
 (C) Statement 1 is true and statement 2 is false.
 (D) Statements 1 & 2 are false.
020. Which factor from the following does not affect the velocity of sound wave in a gaseous medium?
 (A) Molecular weight of the gas (B) Density of medium
 (C) Pressure of the gas (D) Temperature of medium
021. Two balls having masses m_1 & m_2 moving with velocity V_1 & V_2 respectively have same kinetic energy. If $m_1 = 4m_2$ then find the relation between V_1 & V_2 .
 (A) $V_1 = 2V_2$ (B) $V_1 = 4V_2$ (C) $V_1 = 1/2 V_2$ (D) $4V_1 = V_2$
022. Three different blocks P, Q, R having same volume are dropped in to a liquid. The blocks settled down as shown in diagram. Select the proper option showing relation between the weight of block (Fg) & buoyant force (Fb) acting on the blocks P,Q,R respectively.



- (A) $P \rightarrow F_b > F_g$, $Q \rightarrow F_b = F_g$, $R \rightarrow F_b < F_g$
 (B) $P \rightarrow F_b = F_g$, $Q \rightarrow F_b > F_g$, $R \rightarrow F_b < F_g$
 (C) $P \rightarrow F_b < F_g$, $Q \rightarrow F_b > F_g$, $R \rightarrow F_b = F_g$
 (D) $P \rightarrow F_b = F_g$, $Q \rightarrow F_b < F_g$, $R \rightarrow F_b > F_g$

023. The ratio of masses of two objects is 3:4 and that of their velocities is 2:3. Then which of the following is the correct ratio of their kinetic energies?
 (A) 2:1 (B) 1:3 (C) 3:1 (D) 4:3
024. Select from the following the set of correct statements related to the nature of image formed by convex mirror.
1. The Image is always virtual, Inverted and situated in front of mirror.
 2. The Image is always virtual, erect situated behind the mirror.
 3. The nature Image does not depend on the distance of object from the mirror.
 4. The nature of image is always depends on the distance of object from mirror.
 5. The Image is always virtual, smaller than object & erect.
- (A) 1, 2, 3 (B) 3, 4, 5 (C) 2, 3, 5 (D) 1, 2, 3, 4
025. A boy does 2000 J work in 20 S. He walks 100 m in a straight line in the same Time. Find velocity & the force applied by a boy?
 (A) 5 m/s, 100 N (B) 5 m/s, 50 N
 (C) 5 m/s, 20 N (D) 5 m/s, 10 N
026. The work done by the machine in $\frac{3}{4}$ th hour is 540 Joule, what is the power of the machine?
 (A) 2W (B) 0.2W (C) 20W (D) 0.02 W
027. Which of the following statement is incorrect for the given circuit di



- (A) The battery is not connected properly in the circuit.
 (B) When compass is kept near the circuit, it will not show any deflection.
 (C) The given circuit is incomplete because there is no source of electric energy.
 (D) Due to the battery in the circuit electric wire behave as a magnet.
028. Select the correct option of pair of physical quantity and its formula.
- | Physical Quantity | Formula |
|-------------------|--|
| 1) Kinetic Energy | X) $m \cdot a \cdot v$ |
| 2) Power | Y) $(m \cdot a) / A$ |
| 3) Pressure | Z) $\frac{1}{2} p \cdot v \dots \dots \dots p = \text{momentum}$ |
- (A) 1 - Z, 2 - X, 3 - Y (B) 1 - X, 2 - Z, 3 - Y
 (C) 1 - Z, 2 - Y, 3 - X (D) 1 - X, 2 - Y, 3 - Z

023. The ratio of masses of two objects is 3:4 and that of their velocities is 2:3. Then which of the following is the correct ratio of their kinetic energies?

- (A) 2:1 (B) 1:3 (C) 3:1 (D) 4:3

024. Select from the following the set of correct statements related to the nature of image formed by convex mirror.

1. The Image is always virtual, Inverted and situated in front of mirror.
2. The Image is always virtual, erect situated behind the mirror.
3. The nature Image does not depend on the distance of object from the mirror.
4. The nature of image is always depends on the distance of object from mirror.
5. The Image is always virtual, smaller than object & erect.

- (A) 1, 2, 3 (B) 3, 4, 5 (C) 2, 3, 5 (D) 1, 2, 3, 4

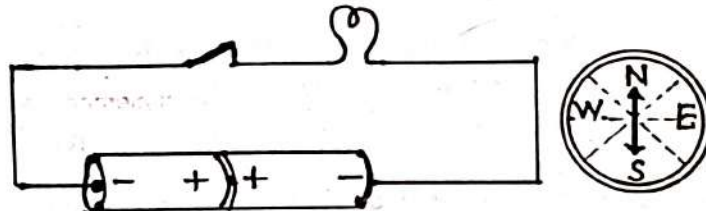
025. A boy does 2000 J work in 20 S. He walks 100 m in a straight line in the same Time. Find velocity & the force applied by a boy?

- (A) 5 m/s, 100 N (B) 5 m/s, 50 N
 (C) 5 m/s, 20 N (D) 5 m/s, 10 N

026. The work done by the machine in 3/4th hour is 540 Joule, what is the power of the machine?

- (A) 2W (B) 0.2W (C) 20W (D) 0.02 W

027. Which of the following statement is incorrect for the given circuit di



- (A) The battery is not connected properly in the circuit.
 (B) When compass is kept near the circuit, it will not show any deflection.
 (C) The given circuit is incomplete because there is no source of electric energy.
 (D) Due to the battery in the circuit electric wire behave as a magnet.

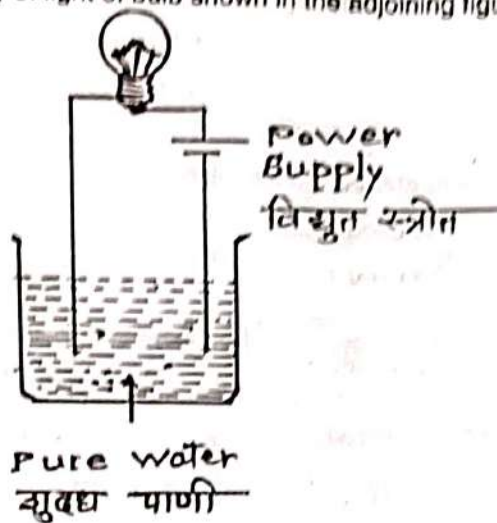
028. Select the correct option of pair of physical quantity and its formula.

Physical Quantity	Formula
1) Kinetic Energy	X) $m \cdot a \cdot v$
2) Power	Y) $(m \cdot a) / A$
3) Pressure	Z) $1/2 p \cdot v \dots \dots \dots p = \text{momentum}$
(A) 1 - Z, 2 - X, 3 - Y	(B) 1 - X, 2 - Z, 3 - Y
(C) 1 - Z, 2 - Y, 3 - X	(D) 1 - X, 2 - Y, 3 - Z

029. A body is suspended to a spring balance hanged in a satellite. The reading of the spring balance is W_1 when satellite goes in an orbit of radius R and W_2 when it goes in an orbit of radius $2R$. Which of the following alternative is correct?
 (A) $W_1 < W_2$ (B) $W_1 = W_2$ (C) $W_1 > W_2$ (D) $W_1 = 0$ & $W_2 > 0$
030. Arrange the following cells in ascending order of their potential differences.
 P: Nickel – Cadmium, Q: Lead acid, R: Dry cell, S : Solar cell.
 (A) P, Q, R, S (B) S, P, R, Q (C) S, Q, R, P (D) P, R, Q, S
031. Find the molarity of HCl solution in which 7.30 gm HCl dissolved in 500 ml.
 (A) 0.2M (B) 0.1M (C) 1.5M (D) 0.4M
032. Find the correct option for P, Q & R in the following chemical equations.
 I. $\boxed{P} + \text{NaOH} \rightarrow \text{NaCl} + \text{H}_2\text{O}$
 II. $\text{HNO}_3 + \boxed{Q} \rightarrow \text{KNO}_3 + \text{H}_2\text{O}$
 III. $\boxed{R} + 2\text{NH}_4\text{OH} \rightarrow (\text{NH}_4)_2\text{SO}_4 + 2\text{H}_2\text{O}$
 (A) P – HCl, Q- H_2SO_4 , R-KOH (B) P – H_2SO_4 , Q-HCl, R-KOH
 (C) P – H_2SO_4 , Q-KOH, R- H_2O (D) P – HCl, Q-KOH, R- H_2SO_4
033. Identify the symbol of element of filament present in electric bulb.
 (A) Ag (B) Sn (C) W (D) Cu
034. Observe the following elements and select the proper group of elements each having 3 isotopes.
 I) Carbon II) Sulphur III) Oxygen IV) Aluminium
 V) Cobalt VI) Chlorine
 (A) I, II, V (B) IV, V, VI (C) I, III (D) IV, V
035. How Many amphoteric Oxides are there from the following oxides?
 PbO , MgO , CO_2 , Na_2O , ZnO , SO_3 , CaO , Al_2O_3
 (A) 3 (B) 4 (C) 5 (D) 2
036. Read the following statements carefully and select correct option.
 Statement I: Electrolytes are good conductor of electricity in their liquid state.
 Statement II: Free electrons or ions are present in the electrolytes.
 (A) Both the statements are correct & statement II is correct explanation of statement I.
 (B) Statement I is incorrect & statement II is correct.
 (C) Statement I is correct & statement II is incorrect.
 (D) Both the statements are incorrect.

037. Which of the following type of coal is used in the steel & cement industry?
- (A) Peat (B) Bituminous
(C) Anthracite (D) Lignite
038. Why synthetic detergents are preferred than soaps?
- I) Synthetic detergents can be used in hard water.
II) Synthetic detergents can be used in acidic medium.
III) Synthetic detergents are more soluble in water.
IV) Synthetic detergents have stronger cleaning action.
- (A) I, II (B) III, IV
(C) I, II, III (D) All above
039. Arrange the following Reservoirs according to their salinity in descending order.
Black sea, Arabian Sea, Lonar Lake, Dead Sea.
- (A) Dead Sea, Lonar Lake, Arabian Sea, Black Sea.
(B) Lonar Lake, Arabian Sea, Black Sea, Dead Sea.
(C) Black Sea, Arabian Sea, Dead Sea, Lonar Lake.
(D) Arabian Sea, Dead sea, Lonar Lake, Black Sea.
040. Which of the following group of bacteria is used in biogas production?
- (A) Eubacteria (B) Organotrophs
(C) Methanotrophs (D) Methanogens
041. Select the false statements from the following.
- I) Liquefied CO_2 is used to remove caffeine from coffee.
II) Chlorination of methane does not occur in dark.
III) Biogas mainly contains methane & Carbon monoxide.
IV) A fire extinguisher contains sodium carbonate powder.
- (A) I, II (B) III, IV
(C) I, II, III (D) None of these
042. Find odd one out according to their uses.
- (A) Teak (B) Eucalyptus
(C) Mahogany (D) Sheesham
043. Which of the following metal does not react with water but reacts with steam?
- (A) Na (B) Mg
(C) Au (D) Zn

044. What will be the intensity of light of bulb shown in the adjoining figure?



- (A) Low
(B) Depends on power
(C) High
(D) Zero

045. Which of the following is molecular formula of Sodium Thiosulphate?

- (A) Na_2SO_4 (B) $\text{Na}_2\text{S}_2\text{O}_3$ (C) $\text{NaC}_7\text{H}_5\text{O}_2$ (D) NaSiO_3

046. Select the option of correct pairs from the following.

Name with Valency	Atomic Number
a) A solid Non-metal of valency '3'	I) 19
b) A gas of valency '2'	II) 15
c) A Metal of valency '1'	III) 14
d) A Non-metal of valency '4'	IV) 8
(A) a-II, b-III, c-I, d-IV	(B) a-I, b-II, c-III, d-IV
(C) a-III, b-IV, c-I, d-II	(D) a-II, b-IV, c-I, d-III

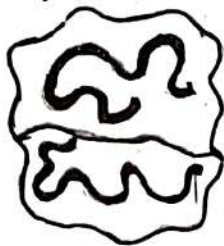
047. How Many Pair/Pairs of the following is/are correct?

Acid	Natural sources
a) Oxalic Acid	- Tomatoes
b) Citric Acid	- Lemon
c) Lactic Acid	- curd
d) Tartaric Acid	- Tamarind
(A) Two	(B) Three
(C) Four	(D) One

048. Which of the following property of water is responsible for controlling the temperature of human body?

- (A) Water is universal solvent.
(B) Water has high surface tension.
(C) Density of water varies with temperature.
(D) Water has high specific heat Capacity.

069. Identify the function/ functions of adipose tissue from the following.
- 1] supports internal organs 2] Insulation
 3] Transport of nutrients and waste 4] Supply of energy 5] Storage of fats
- (A) 1, 3, 5 (B) 2, 4, 5 (C) 1, 2, 4 (D) 1 & 3
070. Choose the correct option showing descending order according to the number of chromosomes present in it.
- (A) Human, Crab, Potato, Maize (B) Crab, Potato, Human, Maize
 (C) Potato, Human, Crab, Maize (D) Crab, Human, Maize, Potato
071. In which of the following disease, hydrophobia is one of the important symptom?
- (A) Rabies (B) Cancer (C) Swine flu (D) Chikungunya
072. Which of the following are the types of WBCs?
- P] Eosinophils Q] Globulins R] Lymphocytes
 S] Prothrombin T] Neutrophils U] Monocytes
- (A) Q, S, T (B) Q, R, S (C) P, R, S, T (D) P, R, T, U
073. Which of the following plants reproduce asexually by spore formation and sexually by zygote formation?
- (A) Marsilea (B) Riccia (C) Ulothrix (D) Marchantia
074. If a pathogenic micro-organism is definitely known then which of the following antibiotic is used for destroying or preventing the growth of them.
- (A) Ampicillin (B) Gentamycin (C) Amoxicillin (D) Tetracycline
075. Identify the correct sequence of type of RNA given below.



K



L



S

- (A) K → r-RNA, L → t-RNA, S → m-RNA (B) K → t-RNA, L → m-RNA, S → r-RNA
 (C) K → m-RNA, L → r-RNA, S → t-RNA (D) K → r-RNA, L → m-RNA, S → t-RNA

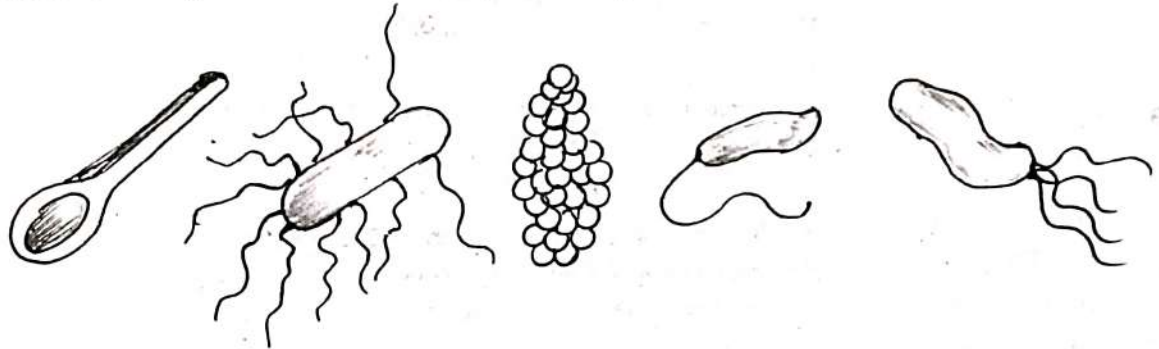
076. Find odd one out [According to the types of sugar]
- (A) Sucrose (B) Fructose (C) Glucose (D) Galactose

077. In which of the following plant the kind of germination is 'Hypogeal'?
- (A) Bean (B) Sunflower (C) Mango (D) Castor
078. Which of the following disease is diagnosed by 'Electrophoresis' test?
- (A) Sickle-cell anemia (B) AIDS
(C) Covid-19 (D) Albinism
079. Read the following statements carefully and identify the correct option about P,Q ,R repectively.
- 1] The long tubular cavity of the spinal cord is called .
- 2] The spinal cord is protected by .
- 3] The cavities present in various part of brain are called .
- (A) P – Ventricles, Q – Cranial Cavity, R – Central canal
(B) P – Central canal, Q – Vertebral column, R – Ventricles
(C) P – Pyramid, Q – Nerve tract, R – Cerebrum
(D) P – Cerebrum, Q – Cerebra spinal fluid, R-pyramid
080. Complete the anaolgy.
- Polygenic disorder : Blood pressure : : Monogenic disorder:
- (A) Constricted stomach (B) Cystic Fibrosis
(C) Cleft lip (D) Asthma
081. Which of the following nutrients play an important role in the production of chlorophyll in the leaves of plant?
- 1] Zinc 2] Iron 3] Phosphorus 4] Magnesium
- (A) 1 & 4 (B) 2 & 3 (C) 1, 2 & 3 (D) 2 & 4
082. Which of the following types of arrangement of leaves are seen on the stem of sunflower and calotropis respectively.
- (A) Opposite & whorled (B) Alternate & whorled
(C) Alternate & decussate (D) Decussate & opposite
083. Which of the following cell organelle digest the stored proteins and fats during starvation period?
- (A) Lysosomes (B) Endoplasmic Reticulum
(C) Mitochondria (D) Golgi Complex
084. Which of the following mediums are/medium is used for tissue culture ?
- P] Liquid Q] Gaseous R] Agar-gel S] Solid
- (A) Only R (B) P, R, S (C) P, Q, S (D) P & S

085. Which of the following movement / Movements of plants is / are related with growth of plants?

- P] Tropic Q] Phototropic R] Hydrotropic S] Gravitropic
 (A) P & R (B) Q & S (C) Only Q (D) All above

086. Observe the diagrams of bacteria carefully and identify that causes cholera and tetanus respectively.



- P Q R S T
 (A) S & R (B) Q & T (C) R & T (D) S & P

087. Identify the correct pair of 'Hazardous waste' from the following .

- (A) Arsenic, Cadmium
 (B) Cerium-141 , Barium-140
 (C) Glass articles, Non – functional cell phones
 (D) Saline bottles, Pesticides

088. Find odd one out [on the basis of classification of plants]

- (A) Sargassum (B) Nephrolepis (C) Pteris (D) Equisetum

089. Identify the correct pair/pairs of constituent and the pH given below.

- 1] Blood – pH 7.4 2] Urine – pH 6.0
 3] Gastric juice – pH 1.0 4] Lemon juice – pH 10.5
 (A) Only 3. (B) 2, 3, 4 (C) 1, 2, 3 (D) 2 & 4

090. Identify the wrong statements form the following .

1. All organism participate in the nitrogen cycle.
 2. Sedimentation cycle is faster than gaseous cycle.
 3. The flow of nutrients in ecosystem is one way.
 4. Oxygen is present in atmosphere, hydrosphere & lithosphere.
- (A) 1 & 2 (B) 2 & 3 (C) 3 & 4 (D) 4 & 1

091. The easily noticed smell of L.P.G is because of which among the following ?

- (A) Butane (B) Propane (C) Methane (D) Ethanethiol / stench

092. What is Swift J1818.0-1607 among the following ?
 (A) Neutron star (B) Black whole (C) White Dwarf (D) Nebula
093. Arrange the following parts of human body in ascending order of their weight.
 1] Skin 2] Liver 3] Brain 4] Lungs
 (A) 3, 4, 2, 1 (B) 1, 2, 3, 4 (C) 1, 4, 3, 2 (D) 4, 3, 2, 1
094. Which of the following organ/tissue of human body is most sensitive to intake of lead?
 (A) Blood (B) Brain (C) Kidney (D) Lungs
095. Select from the following the correct substance of which PVC is polymer.
 (A) Propane (B) Vinyl chloride (C) Styrene (D) Carbonate
096. As per recent study by IIT Kharagpur which region of India is named as global hot-spot of atmospheric ammonia (NH_3)?
 (A) Southern coastal region (B) Indo Gangetic plain
 (C) Deccan Plateau (D) Western Ghat
097. Match List – I with List – II & select correct answer form the following.
- | List-1 (Medicine) | List-II (Use) |
|------------------------------|----------------------------|
| a) Tumeric | I. Immunity booster |
| b) Fennel Seeds | II. Heal wounds |
| c) Clove | III. Healthy stomach |
| d) Tulsi | IV. Tooth Ache |
| (A) a – II, b-III, c-IV, d-I | (B) a-II, b-I, c-IV, d-III |
| (C) a-II, b-I, c-III, d-IV | (D) a-III, b-I, c-IV, d-II |
098. In which state of India the first case of 'Monkey-pox' was reported?
 (A) Uttar Pradesh (B) Kerala (C) Sikkim (D) Punjab
099. Where is the India's 'Largest floating solar power plant' has been Established?
 (A) Andhra Pradesh (B) Odisha
 (C) Tamilnadu (D) Telangana
100. Which national park in India has set up the country's First quarantine facility for animals?
 (A) Jim Corbet (B) Ranthambore
 (C) Kaziranga (D) Gir Forest

कच्च्या कामासाठी जागा /SPACE FOR ROUGH WORK

Anyone found in unauthorised possession of this booklet is liable to be prosecuted.
Copyright reserved. This test or any part thereof may not be reproduced in any form